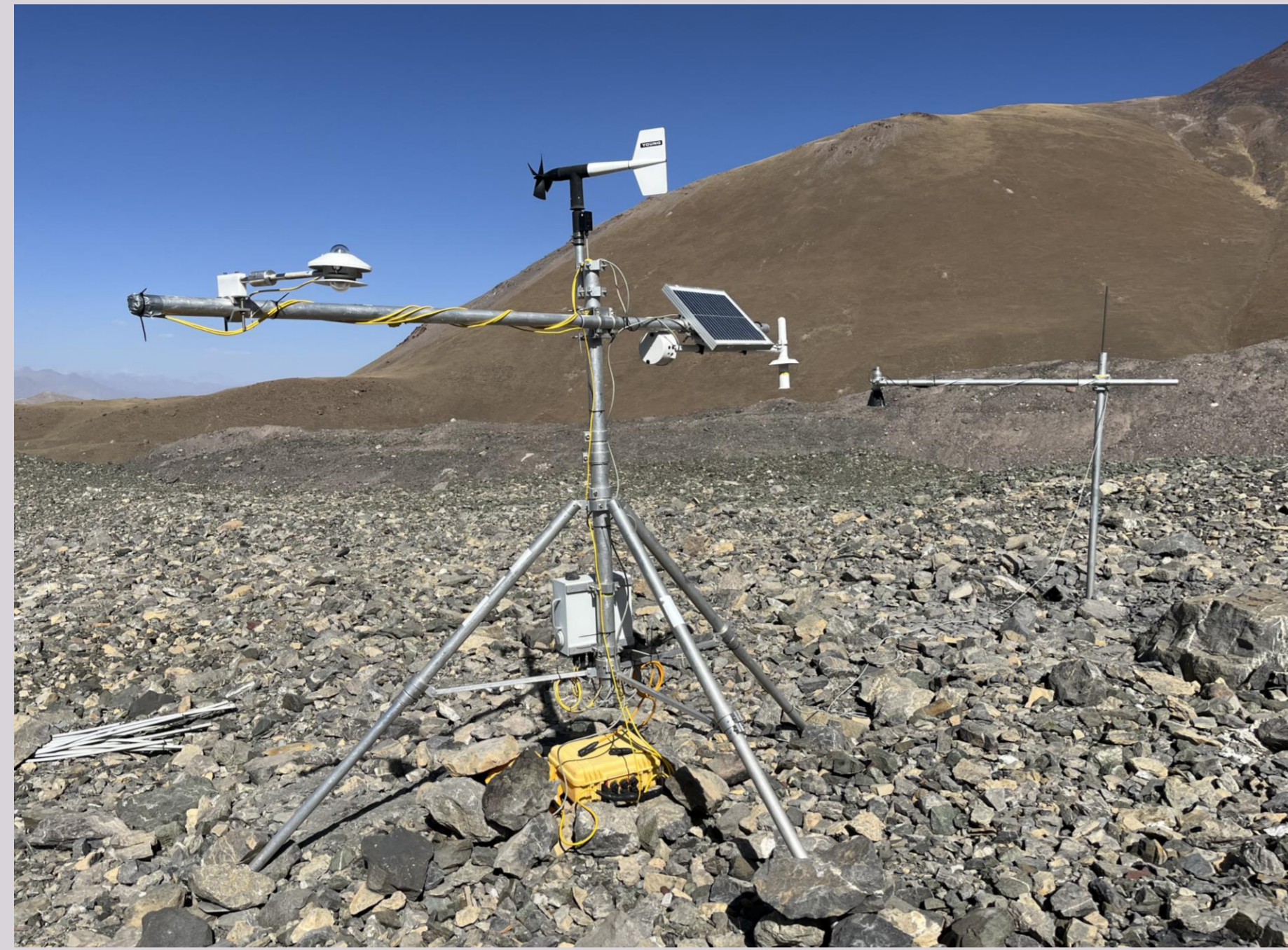


A. Jouberton<sup>1,2</sup>, S. Fugger<sup>1,2</sup>, E.S. Miles<sup>1</sup>, P. Buri<sup>1</sup>, M. Kneib<sup>1,2</sup>, A. Kayumov<sup>3</sup>, F. Homidov<sup>3</sup>, A. Halimov<sup>3</sup>, H. Kabutov<sup>3</sup>, F. Vosidov<sup>3</sup>, H. Navruzshoev<sup>3</sup>, Peter Molnar<sup>2</sup>, F. Pellicciotti<sup>1,4</sup>

<sup>1</sup>Swiss Federal Institute for Forest, Snow and Landscape Research (WSL), Birmensdorf, Switzerland; <sup>2</sup>Institute of Environmental Engineering, ETH Zurich, 8093 Zurich, Switzerland; <sup>3</sup>Center for the Research of Glaciers of the Tajik Academy of Tajikistan, Dushanbe, Tajikistan; <sup>4</sup>Department of Geography, Northumbria University, Newcastle, UK. Corresponding author: Achille Jouberton (achille.jouberton@wsl.ch)

## Glacier surface measurements



Boundary-layer fluxes measurements

## Meteorological observations



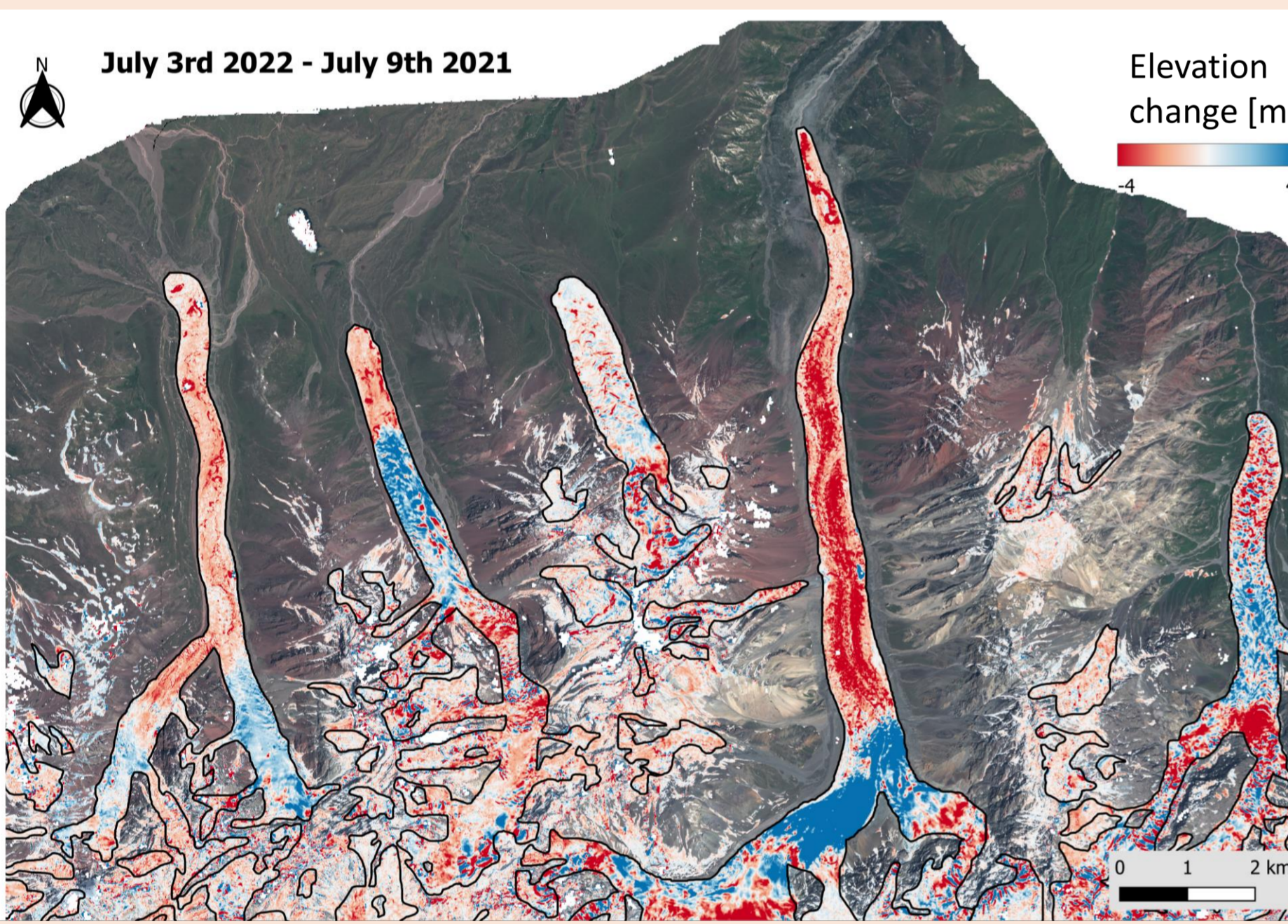
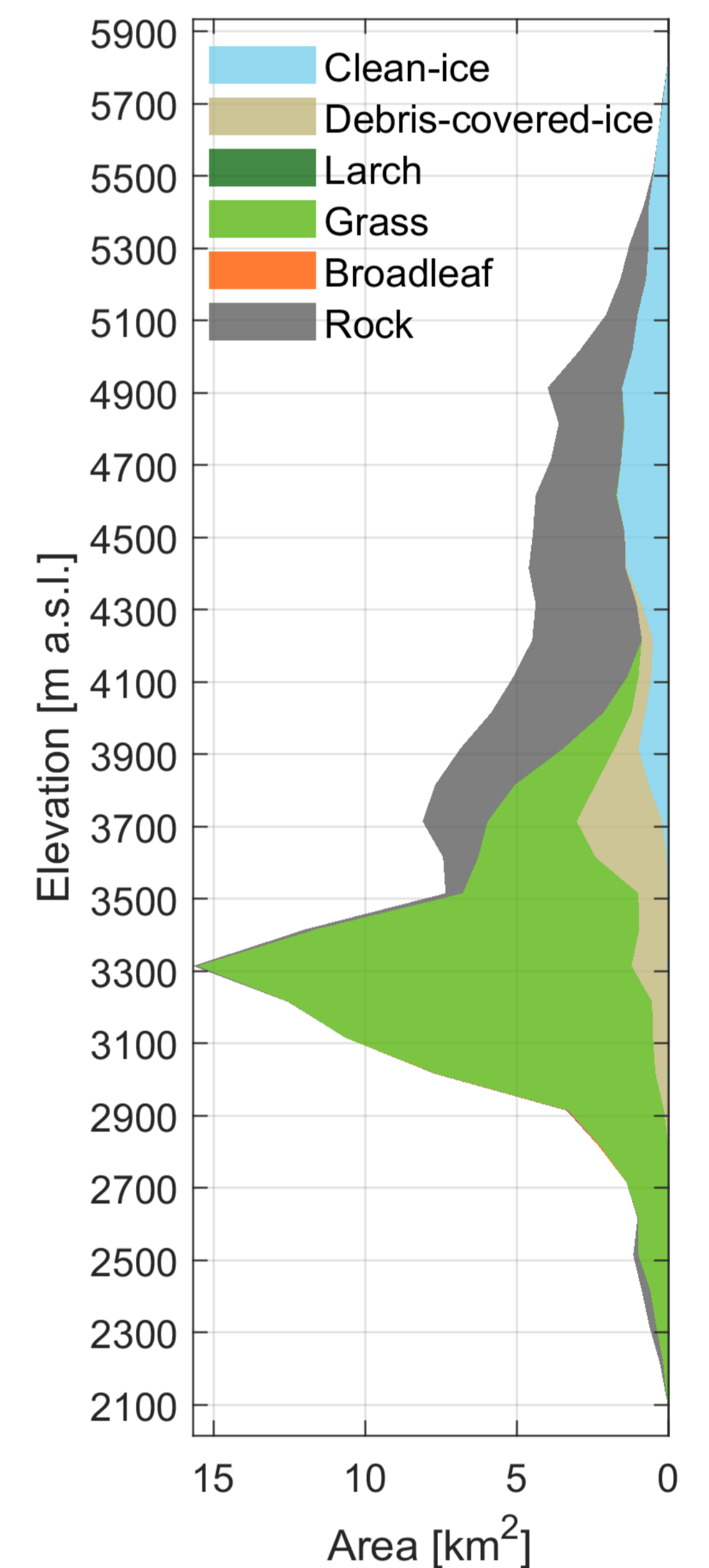
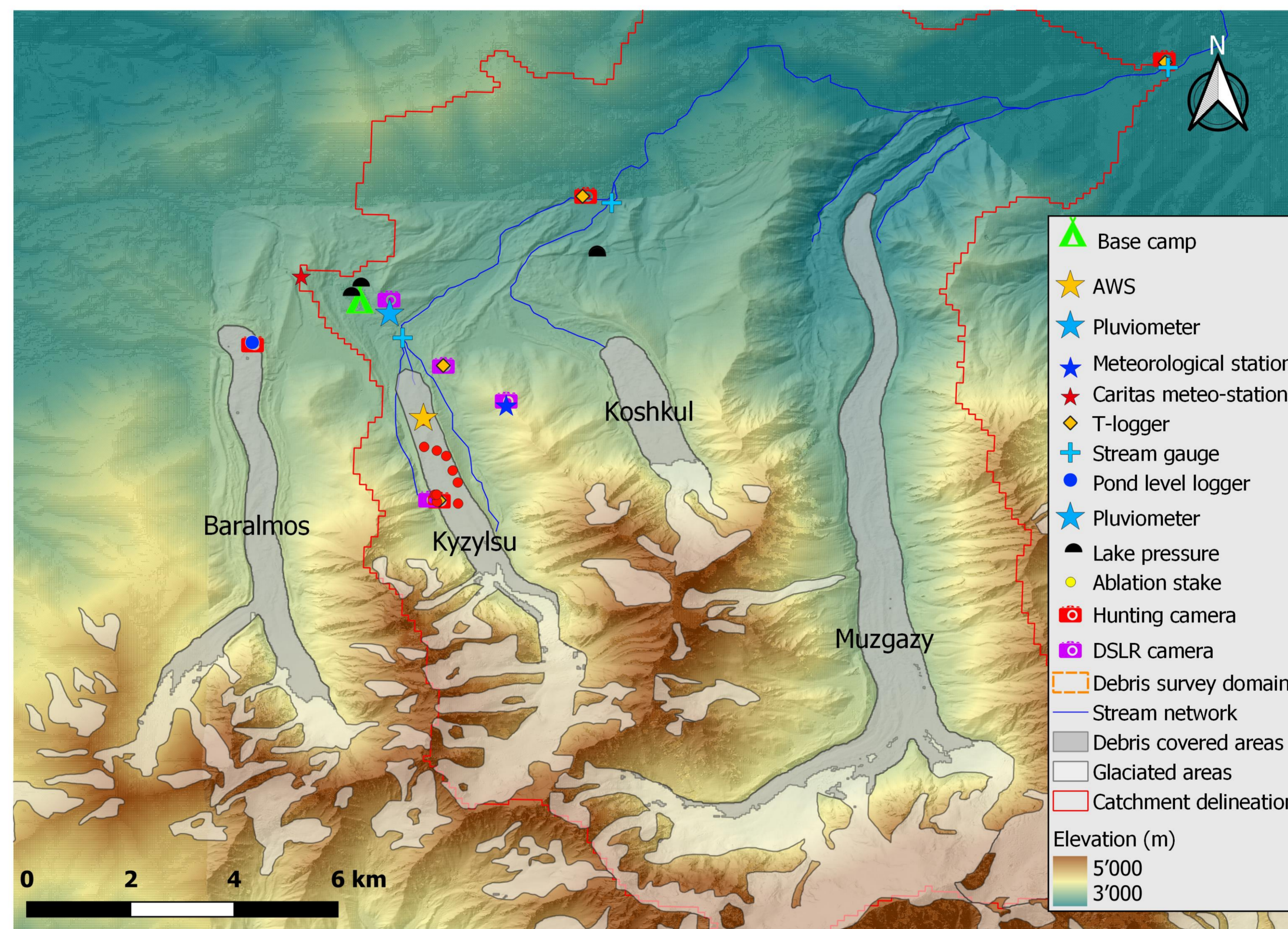
Pluviometer station ( 3371m a.s.l.)



Snow station ( 3910 m a.s.l.)



Ablation stakes and dGPS surveys



## Remote sensing

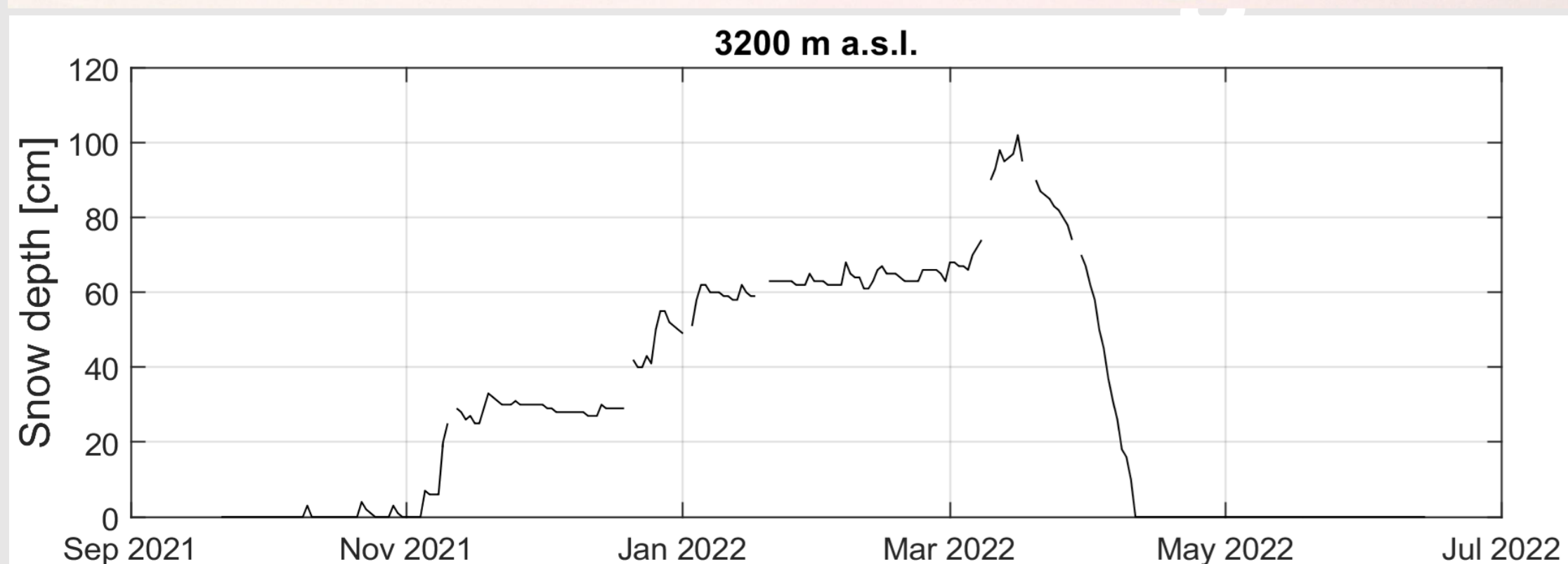
Satellite: Pleiades (shown above), Sentinel, Landsat, MODIS



## Catchment characteristics:

- Elevation range: 2870 - 5806 m
- Climate: semi-arid
- Area: 161.9 km<sup>2</sup>
- Glacierized area: 19.6%
- Monitored since July 2021

## Snow depth monitoring



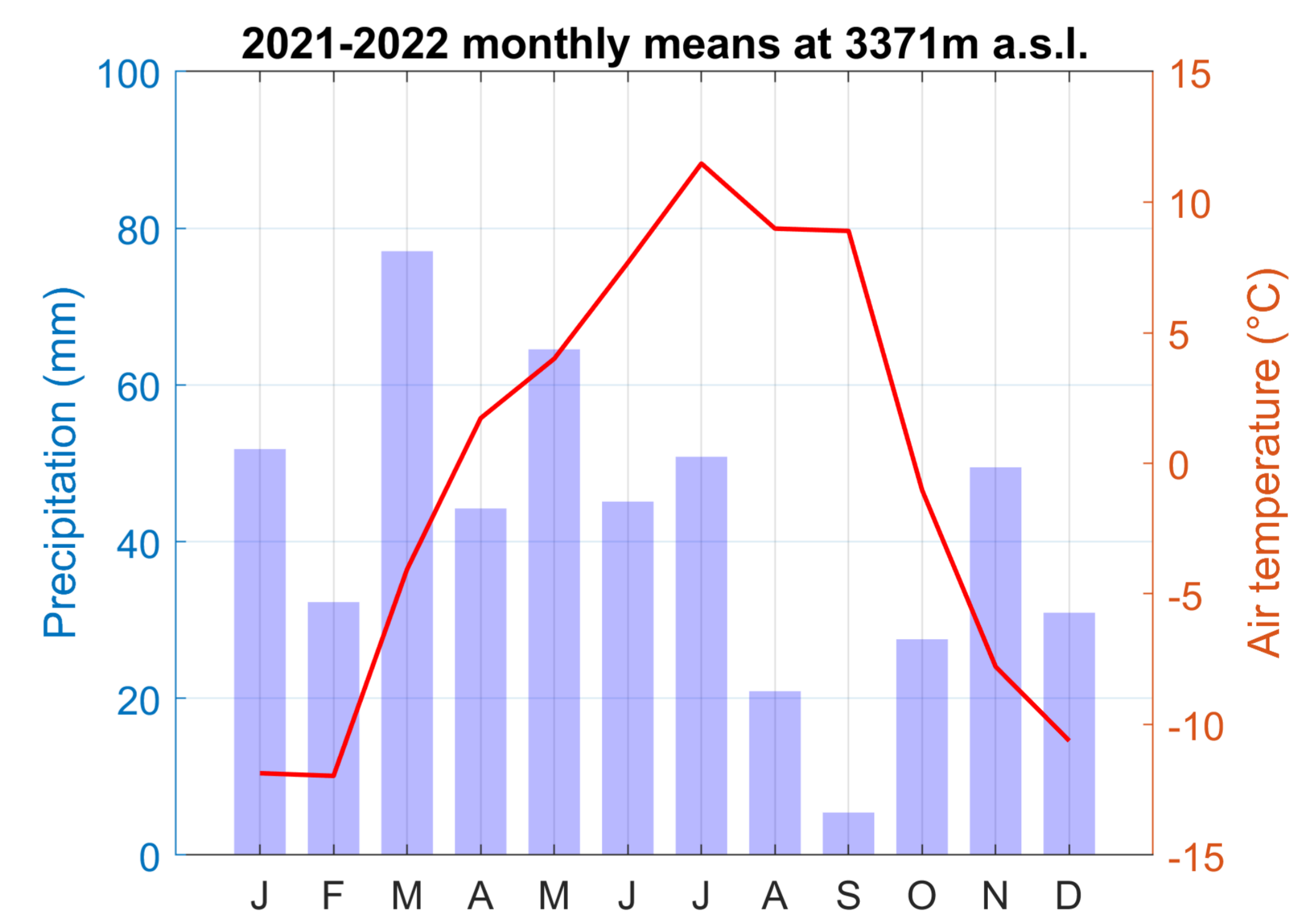
Cameras: Canon 2000D DSLR and STEALTH DS4K

## Stream discharge gaging



Water level: HOBO level loggers

Stream discharge: Salt and fluoescin



## Acknowledgments

Fieldwork was funded primarily by the European Research Council (RAVEN), the Swiss Polar Institute (PAMIR) and the Swiss National Science Foundation (ASCENT, HOPE). Research support was provided by the Center for the Research of Glaciers (CRG), Tajik Academy of Sciences, led by Professor Abdulhamid Kayumov.